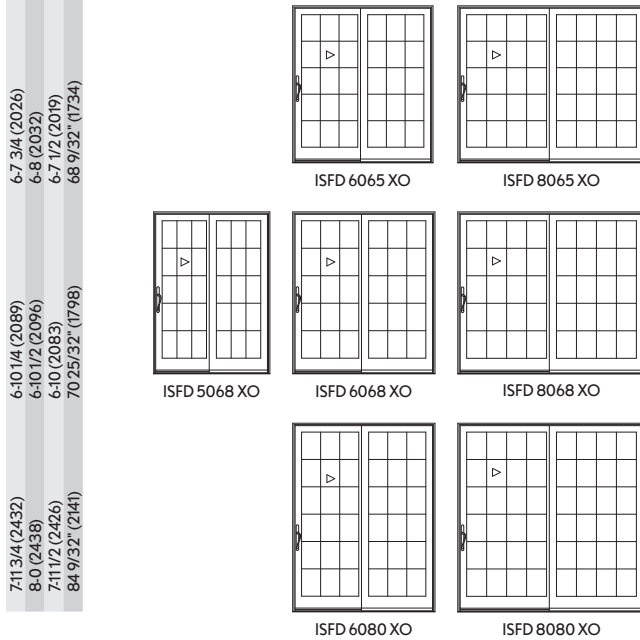


SLIDING FRENCH DOOR

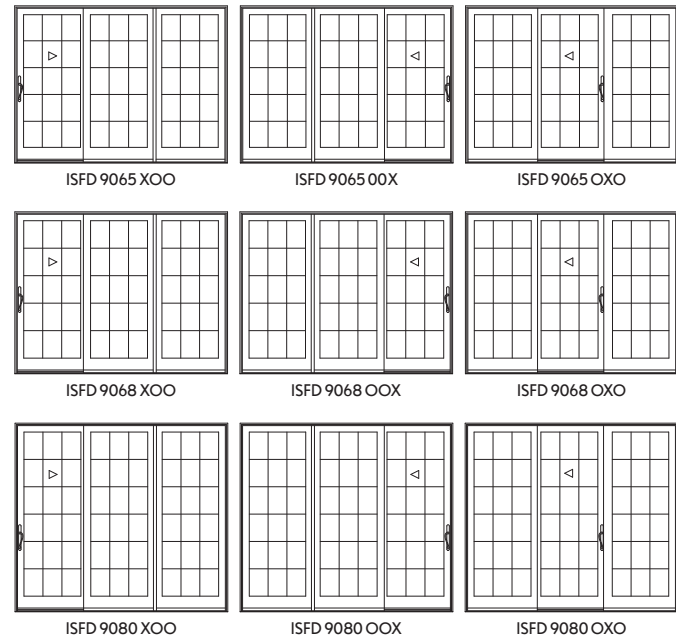
2 Panel Sliding French Doors

Mas. Opg. (mm)	4-11 1/2 (1511)	5-11 1/2 (1816)	7-11 1/2 (2426)
Rgh. Opg. (mm)	5-0 (1524)	6-0 (1829)	8-0 (2438)
Frame Size (mm)	4-11 (1499)	5-11 (1803)	7-11 (2413)
Glass Size (mm)	23 9/16" (598)	29 9/16" (751)	41 9/16" (1056)



3 Panel Sliding French Doors

8-11 (2718)	8-11 (2718)	8-11 (2718)
8-11 1/2 (2731)	8-11 1/2 (2731)	8-11 1/2 (2731)
8-10 1/2 (2705)	8-10 1/2 (2705)	8-10 1/2 (2705)
29 9/16" (751)	29 9/16" (751)	29 9/16" (751)



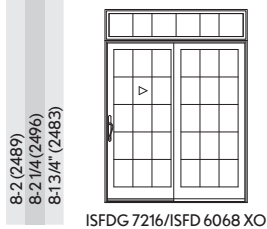
Sliding French Door Direct Glaze Transom

Mas. Opg. (mm)	5-11 1/2 (1816)	8-11 (2718)
Rgh. Opg. (mm)	6-0 (1829)	8-11 1/2 (2731)
Frame Size (mm)	5-11 (1803)	8-10 1/2 (2705)



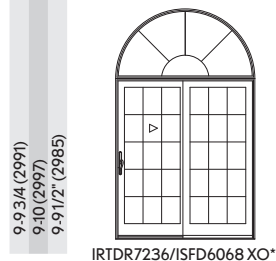
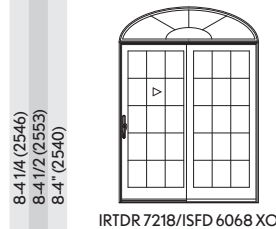
Direct Glaze Transom Over Sliding French Door

Mas. Opg. (mm)	5-11 1/2 (1816)
Rgh. Opg. (mm)	6-0 (1829)
Frame Size (mm)	5-11 (1803)

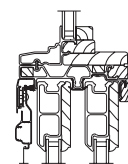
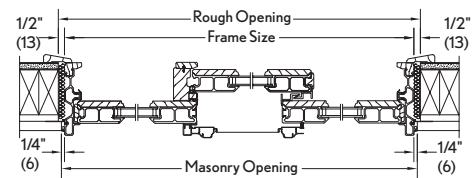
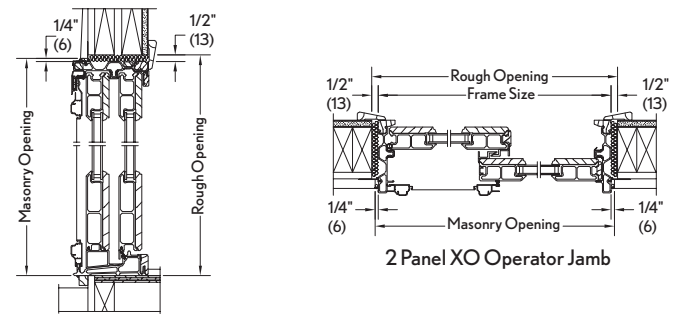


Round Top Over Sliding French Door

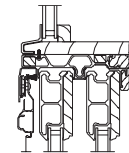
Mas. Opg. (mm)	5-11 1/2 (1816)
Rgh. Opg. (mm)	6-0 (1829)
Frame Size (mm)	5-11 (1803)



Construction Details



Direct Glaze Transom Over Sliding French Door



Round Top Over Sliding French Door

MULTIPLE ASSEMBLIES

Multiple assembly units can be factory mullied up to 1 unit wide by 2 units high. Maximum Rough Opening not to exceed 72" x 100 1/2". Field mull kits available for up to 3 units wide by 2 units high not to exceed 110" x 112". True Half Round transoms are available field mullied only. Structural mullion reinforcement is required for some assemblies. Please consult your local Integrity representative for more information.

* This product is only available field mullied.